

DEMOLITION CALLOUTS:

- 1 EXISTING BUILDING TO BE DEMOLISHED.
- 2 EXISTING AC PAVEMENT TO BE REMOVED.
- 3 EXISTING CONCRETE PAVEMENT TO BE REMOVED.
- 4 EXISTING CURB TO BE REMOVED.
- 5 EXISTING CURB AND GUTTER TO BE REMOVED.
- 6 EXISTING DRIVEWAY TO BE REMOVED.
- 7 REMOVE EXISTING PLANTER.
- 8 REMOVE EXISTING LOCKERS.
- 9 REMOVE EXISTING BUS STOP.
- 10 REMOVE 8" STORM DRAIN PIPE.
- 11 REMOVE EXISTING DI.
- 12 REMOVE 15" STORM DRAIN PIPE

- EXISTING TREES TYPE:
- A PLATANUS X ACERIFOLIA – LONDON PLANE TREE
 - B PYRUS 'CAPITAL'– ORNAMENTAL PEAR TREE
 - C CELTIS AUSTRALIS – EUROPEAN HACKBERRY
 - D QUERCUS LOBATA – VALLEY OAK TREE
 - E CELTIS SINENSIS – CHINESE HACKBERRY
 - F GLEDITSIA TRIACANTHOS – HONEY LOCUST TREE
- REMOVE EXISTING TREES THAT ARE MARKED X.

DEMOLITION NOTES:

- CONTRACTOR SHALL OBTAIN DEMOLITION PERMIT AND ALL ASSOCIATED PERMITS THAT ARE REQUIRED BY CURRENT CITY/ COUNTY / STATE AND FEDERAL REGULATIONS PRIOR TO COMMENCEMENT OF WORK.
- CONTRACTOR SHALL HAVE AN EROSION AND SEDIMENT CONTROL PLAN IN PLACE AS REQUIRED BY CURRENT REGULATIONS.
- CONTRACTOR SHALL CONTACT USA UNDERGROUND SERVICE ALERT AS REQUIRED FOR MARKING OF EXISTING UTILITIES.
- CONTRACTOR IS RESPONSIBLE FOR PROTECTION OF ALL EXISTING SURFACE IMPROVEMENTS AND ALL UNDERGROUND AND OVERHEAD UTILITIES THAT SERVE OTHER PROPERTIES. CONTRACTOR SHALL NOT ENTER ADJACENT PRIVATE PROPERTIES UNLESS THERE IS A WRITTEN RIGHT OF ENTRY IN POSSESSION OF CONTRACTOR.
- ALL ONSITE BUILDING IMPROVEMENTS INCLUDING FOOTINGS WILL BE DEMOLISHED AND PROPERLY DISPOSED OF AS DIRECTED BY PROJECT ARCHITECT / CONSTRUCTION MANAGER.
- ALL UTILITIES SERVING THE BUILDING WILL BE PROPERLY CAPPED AND MARKED ON GROUND AND ON THE SITE DEMOLITION PLAN AT PUBLIC RIGHT OF WAY LINE(R/W) AND ALL CAPPED UTILITIES WILL BE WITHIN R/W LINE. CONTRACTOR WILL MAINTAIN AN AS-DEMOLISHED PLAN DRAWING OF THIS SITE AND FURNISH THE AS-DEMOLISHED LOCATION AND ELEVATION PLAN FOR ALL EXISTING AND CAPPED UTILITIES TO PROJECT ARCHITECT UPON COMPLETION OF DEMOLITION.
- ALL UNSUITABLE MATERIAL WILL BE REMOVED FROM SITE AS REQUIRED BY THE GEOTECHNICAL REPORT.
- CONTRACTOR WILL FOLLOW THE GEOTECHNICAL REPORT IN GENERAL AND THE LATEST STANDARD SPECIFICATIONS FOR PUBLIC WORKS CONSTRUCTION IN THE CITY OF SACRAMENTO.
- LIMITS OF DEMOLITION ARE WITHIN PROPERTY LINES EXCEPT WHERE EXISTING IMPROVEMENTS ARE TO BE PROTECTED. WITHIN THE LIMIT OF WORK DEMOLISH AND REMOVE SURFACE AND UTILITY IMPROVEMENTS INCLUDING: SIGNAGE, DRAINS, LANDSCAPING, CURBS, WALKS, RAMPS, PAVEMENT AND BUILDING.
- PRIOR TO DEMOLITION, PERFORM A SITE INSPECTION AFTER ALL UTILITIES ARE MARKED BY USA UNDERGROUND SERVICE ALERT AND REVIEW AND PROVIDE PROTECTION FOR ALL IMPROVEMENTS THAT ARE TO REMAIN.
- DUST CONTROL – CONTRACTOR SHALL COMPLY WITH ALL LOCAL, STATE AND FEDERAL REGULATIONS FOR DUST CONTROL.
- CONTRACTOR SHALL REVIEW DEMOLITION REQUIREMENTS INDICATED IN GEOTECHNICAL REPORT AND COMPLY WITH ALL REQUIREMENTS.
- IMPROVEMENTS OUTSIDE THE LIMIT OF WORK SHALL BE PROTECTED FROM DAMAGE
- THE TYPES, LOCATIONS, SIZES AND/OR DEPTHS OF EXISTING UNDERGROUND UTILITIES AS SHOWN ON THESE DRAWINGS WERE OBTAINED FROM SOURCES OF VARYING RELIABILITY. THE CONTRACTOR IS CAUTIONED THAT ONLY ACTUAL EXCAVATION WILL REVEAL THE TYPES, EXTENTS, SIZES, LOCATIONS AND DEPTHS OF SUCH UNDERGROUND UTILITIES. A REASONABLE EFFORT HAS BEEN MADE TO LOCATE AND DELINEATE ALL KNOWN UNDERGROUND UTILITIES. HOWEVER, JTS ENGINEERING CAN ASSUME NO RESPONSIBILITY FOR THE COMPLETENESS OR ACCURACY OF THE DELINEATION OF SUCH UNDERGROUND UTILITIES NOR THE EXISTENCE OF OTHER BURIED OBJECTS OR UTILITIES WHICH MAY BE ENCOUNTERED BUT WHICH ARE NOT SHOWN ON THESE DRAWINGS.
- THE CONTRACTOR SHALL INDIVIDUALLY VERIFY THAT EACH SITE UTILITY INCLUDING GAS, TELEPHONE, CABLE TV, SEWER, WATER AND ELECTRIC HAS BEEN TAKEN OUT OF SERVICE PRIOR BEGINNING WORK. UTILITIES TO BE ABANDONED SHALL BE REMOVED AND DISPOSED OF OFFSITE.
- THE PRESENCE OF HAZARDOUS MATERIALS IS UNKNOWN. CONTRACTOR IS RESPONSIBLE FOR OBTAINING AN EVALUATION REPORT AND OBTAIN PERMITS TO REMOVE AND DISPOSE OF THOSE MATERIALS AS REQUIRED BY CITY / COUNTY / STATE / AND FEDERAL REGULATIONS.
- CONTRACTOR TO CONTACT UTILITIES CUSTOMER SERVICE DEPARTMENT 808-5371 FOR WATER SHUT OFF A MINIMUM OF 48 HRS PRIOR TO BEGINNING DEMOLITION WORK.
- EXCAVATION MORE THAN 2 FEET DEEP FROM EXISTING SURFACE WITHIN 5' OF LIMIT OF WORK REQUIRES REVIEW BY PROJECT STRUCTURAL TO IDENTIFY MITIGATION TO PREVENT DAMAGE TO ADJACENT IMPROVEMENTS.

BENCHMARK ELEVATION: 35.664'
CITY B.M. 298-B7E
HILTI NAIL IN BASE OF SECOND ST.
LIGHT (HISTORIC TYPE), EAST SIDE
OF 65TH ST., 90' ±NORTH OF
FOLSOM BLVD. D.B DATUM:NGVD29
FIELD BOOK NUMBER: PAGE:

JTS ENGINEERING
CONSULTANTS, INC.
1808 J STREET
SACRAMENTO, CALIFORNIA 95811 (916) 441-6708

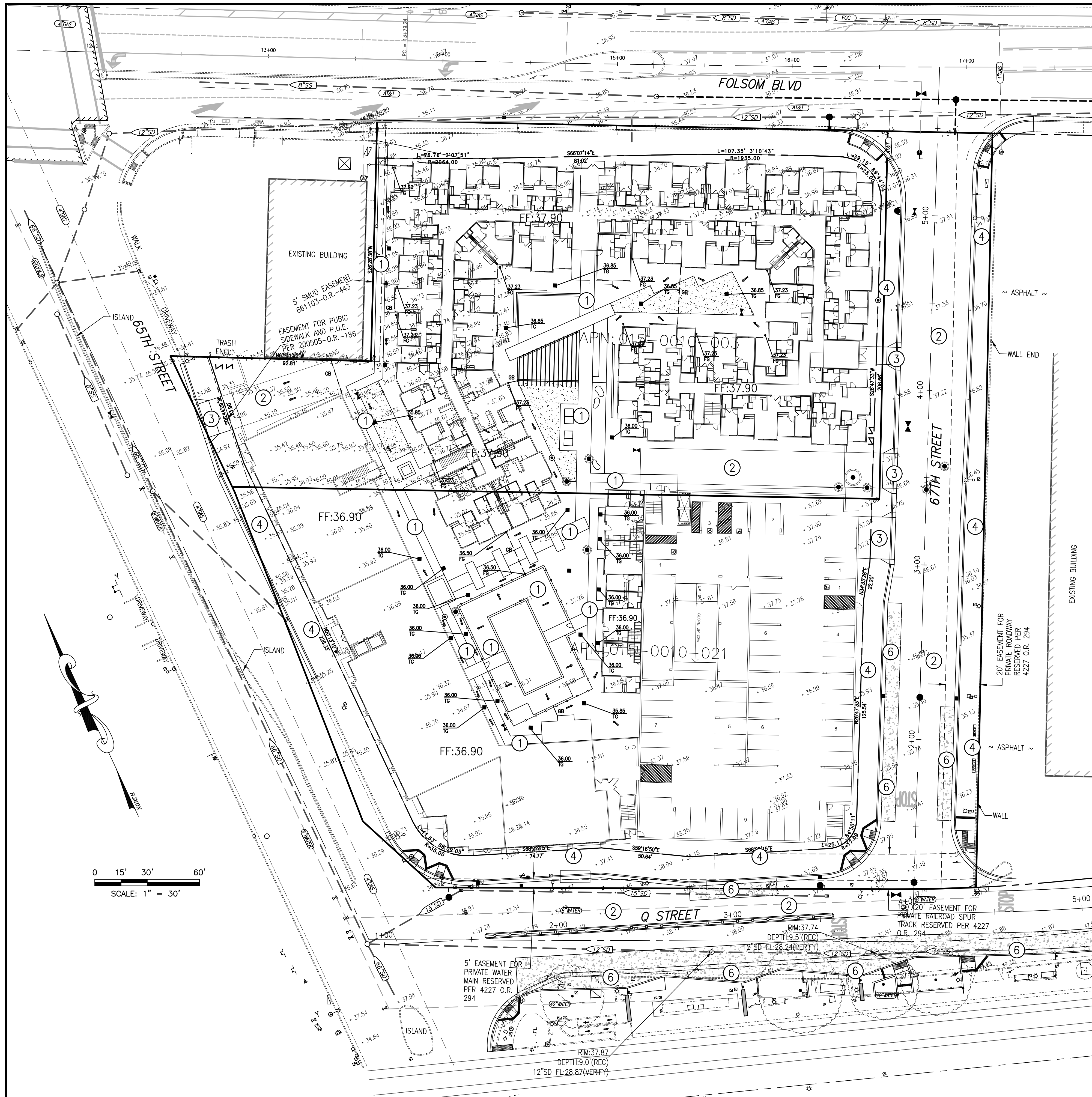
DESIGNED:	PHYA	SCALE:	
DRAWN:	PHYA	H:1"=30'	
CHECKED:	FNW	V:	
SUBMITTED:	JAVED T. SIDDIQUI	RCE:25924	



NO.	DESCRIPTION	ENGR INIT	APPROVAL BY	DATE

PRELIMINARY DEMOLITION PLAN
6620 AND 6800 FOLSOM BLVD
CITY OF SACRAMENTO
APN: 015-001-003 AND 021
CALIFORNIA

DATE: 5-15-18
SHEET
C1
OF **4**



PERVIOUS AREA CALCULATION WITHIN THE NEW LOT:

TOTAL AREA OF EXISTING ONSITE PERVIOUS = 23,132 SF+/-

TOTAL AREA OF PROPOSED ONSITE PERVIOUS = 24,197 SF+/-

GRADING CALLOUTS:

- ① PROPOSED PCC SIDEWALK
- ② PROPOSED AC PAVEMENT
- ③ PROPOSED DRIVEWAY
- ④ PROPOSED PUBLIC SIDEWALK
- ⑤ PROPOSED PUBLIC CURB AND GUTTER
- ⑥ PROPOSED BUS STOP

BENCHMARK ELEVATION: 35.664'

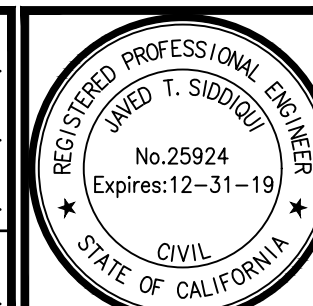
CITY B.M. 298-B7E
HILTI NAIL IN BASE OF SECOND ST.
LIGHT (HISTORIC TYPE), EAST SIDE
OF 65TH ST., 90' ± NORTH OF
FOLSOM BLVD. D.B. DATUM:NGVD29

FIELD BOOK NUMBER: PAGE:

JTS ENGINEERING
CONSULTANTS, INC.

1808 J STREET
SACRAMENTO, CALIFORNIA 95811 (916) 441-6708

DESIGNED: PHYA
DRAWN: PHYA
CHECKED: FNW
SUBMITTED: JAVED T. SIDDIQUI
SCALE:
H: 1" = 30'
V:
RCE: 25924



NO.	DESCRIPTION	ENGR INIT	APPROVAL BY	DATE

CITY OF SACRAMENTO

PRELIMINARY GRADING PLAN

6620 AND 6800 FOLSOM BLVD

APN: 015-001-003 AND 021

CALIFORNIA

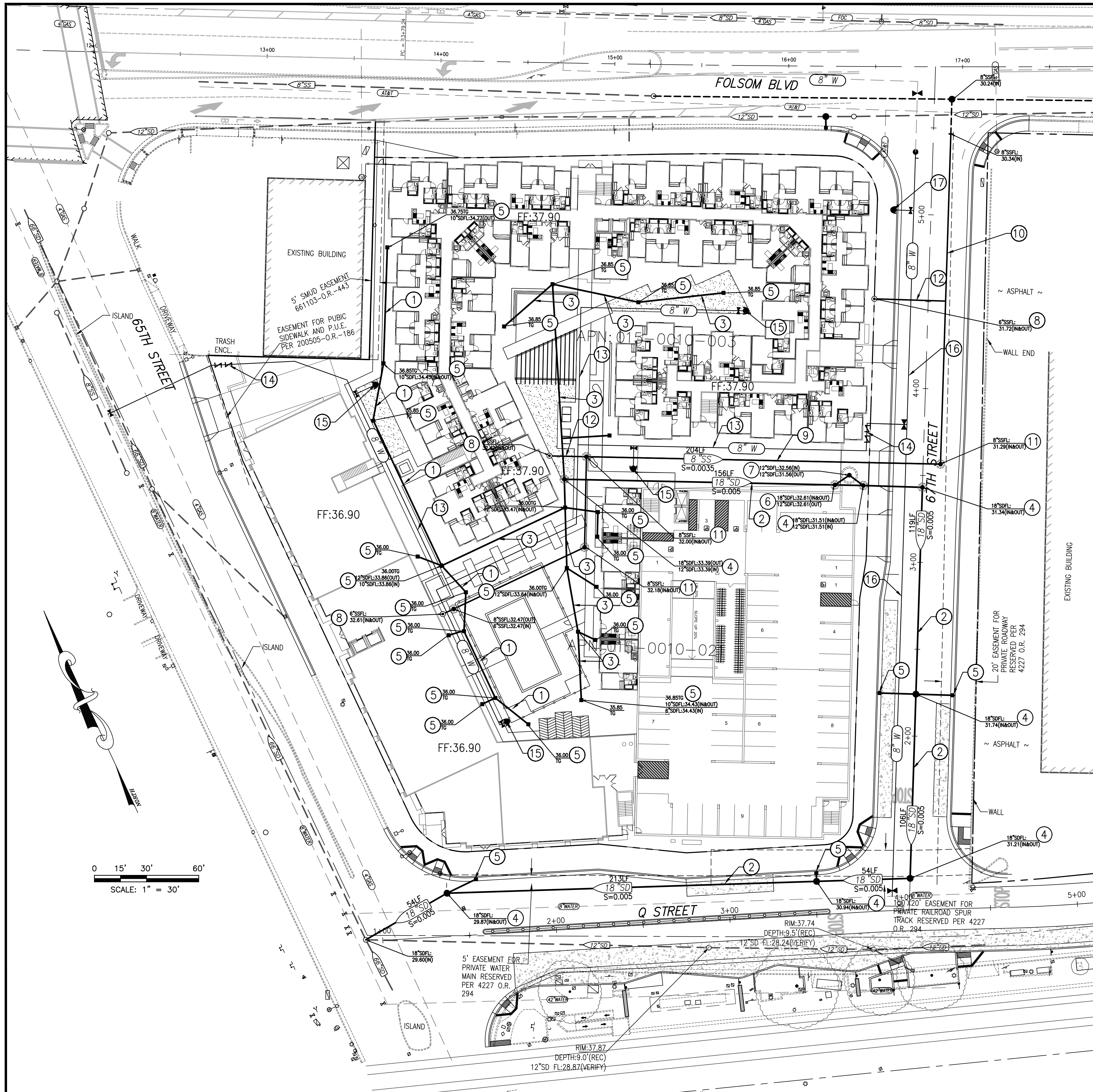
DATE: 5-15-18

SHEET

C2

OF 4

JOB NO: 2017-094



UTILITY CALLOUTS:

- ① PROPOSED 10" PIPE
- ② PROPOSED 18" SD PIPE
- ③ PROPOSED 12" SD PIPE
- ④ PROPOSED SD MANHOLE
- ⑤ PROPOSED SD INLET
- ⑥ PROPOSED SD MANHOLE WITH STORMGATE
- ⑦ PROPOSED CONTECH 96" STORMWATER FILTER MANHOLE
- ⑧ PROPOSED SS CLEANOUT TO GRADE
- ⑨ PROPOSED 8" SS PIPE PRIVATE MAIN
- ⑩ PROPOSED 8" SS PIPE PUBLIC MAIN
- ⑪ PROPOSED SS MANHOLE
- ⑫ PROPOSED 6" SS PIPE
- ⑬ PROPOSED 8" PRIVATE FIRE WATER PIPE
- ⑭ PROPOSED PRIVATE FIRE BACKFLOW DEVICE
- ⑮ PROPOSED ONSITE FIRE HYDRANT
- ⑯ PROPOSED 8" PUBLIC WATER MAIN
- ⑰ PROPOSED PUBLIC FIRE HYDRANT

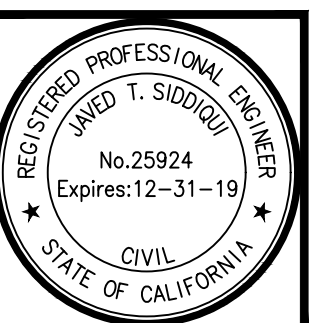
NOTES:

1. ALL RAINWATER LEADERS WILL BE CONNECTED TO THE ONSITE STORM DRAIN SYSTEM.
2. EACH PROPOSED BUILDINGS WILL HAVE A SEPARATE FIRE SPRINKLER SERVICE WITH BACKFLOW DEVICE.
3. THE PROJECT SITE WILL HAVE ONE IRRIGATION SERVICE.
4. EACH PROPOSED BUILDINGS WILL HAVE A SEPARATE DOMESTIC WATER SERVICE WITH REDUCED PRESSURE BACKFLOW DEVICE.

BENCHMARK ELEVATION: 35.664'
CITY B.M. 298-B7E
HILT NAIL IN BASE OF SECOND ST.
LIGHT (HISTORIC TYPE), EAST SIDE
OF 65TH ST., 90' ± NORTH OF
FOLSOM BLVD. D.B DATUM:NGVD29
FIELD BOOK NUMBER: PAGE:

JTS ENGINEERING
CONSULTANTS, INC.
1808 J STREET
SACRAMENTO, CALIFORNIA 95811 (916) 441-6708

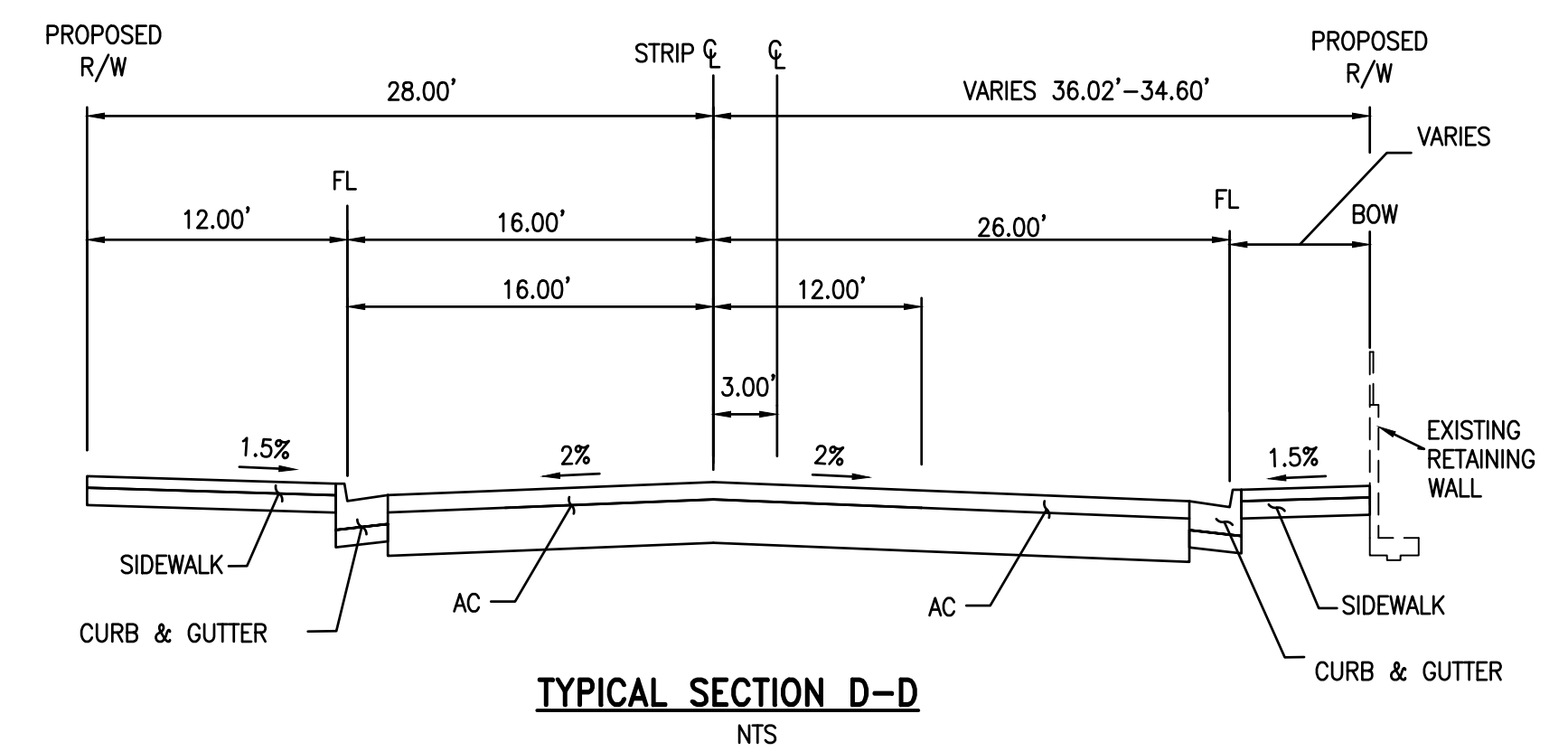
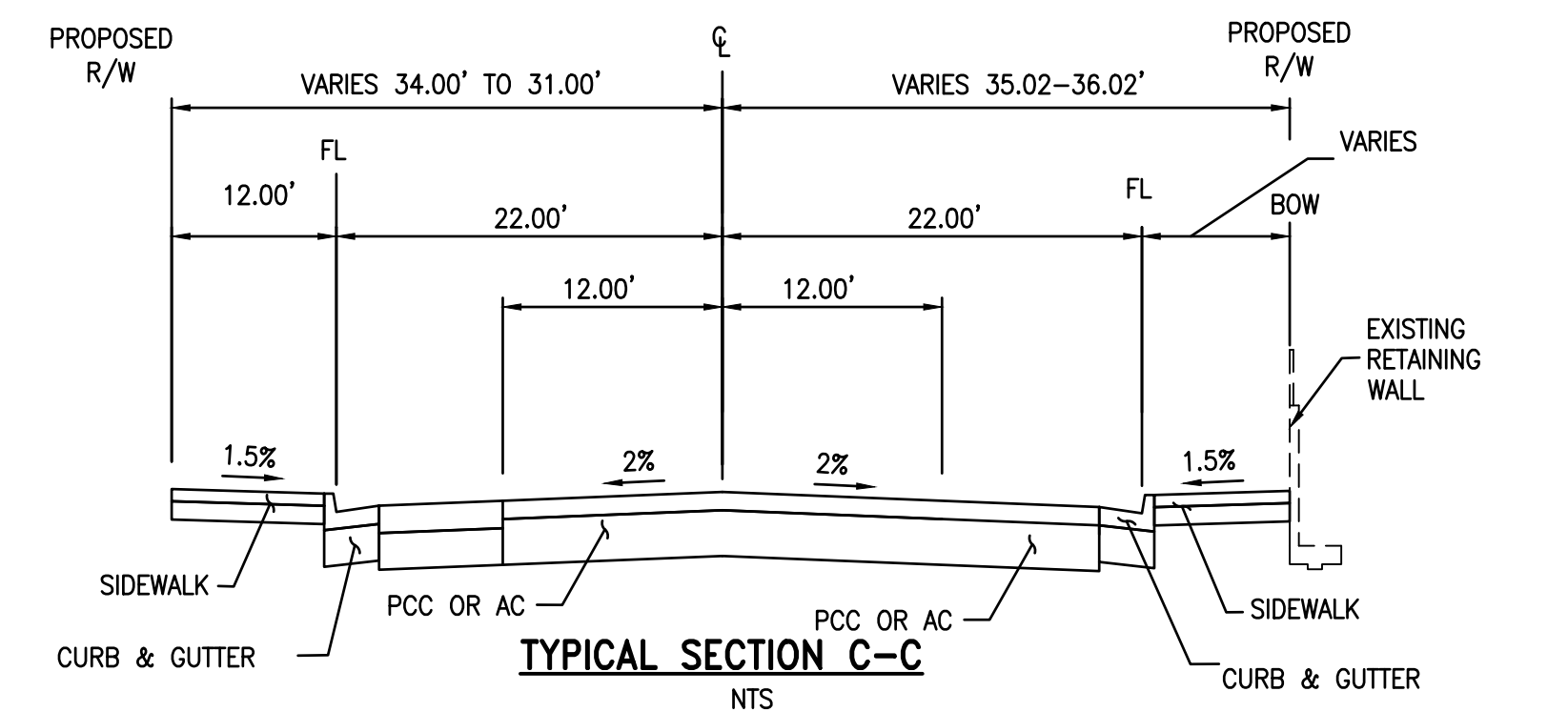
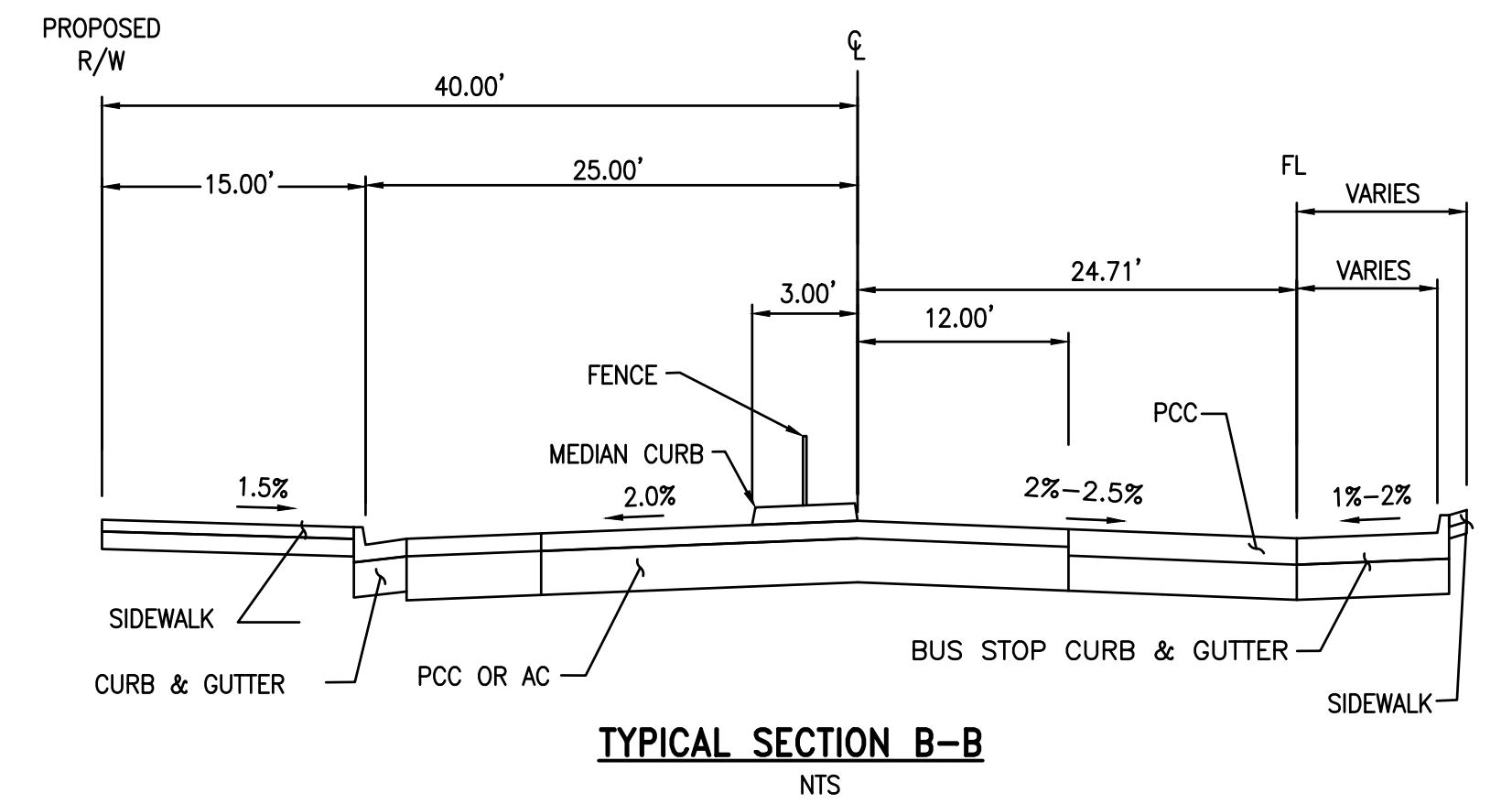
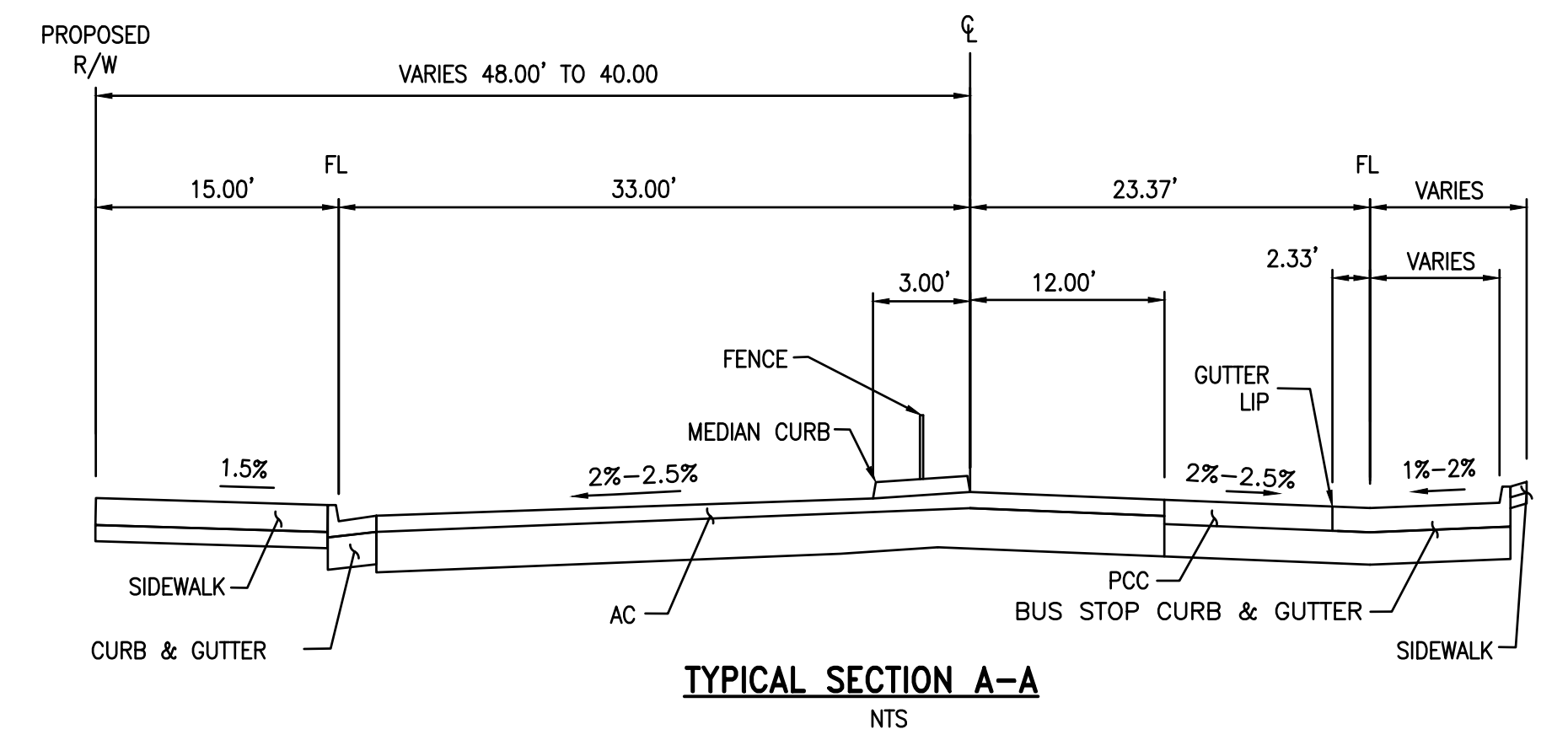
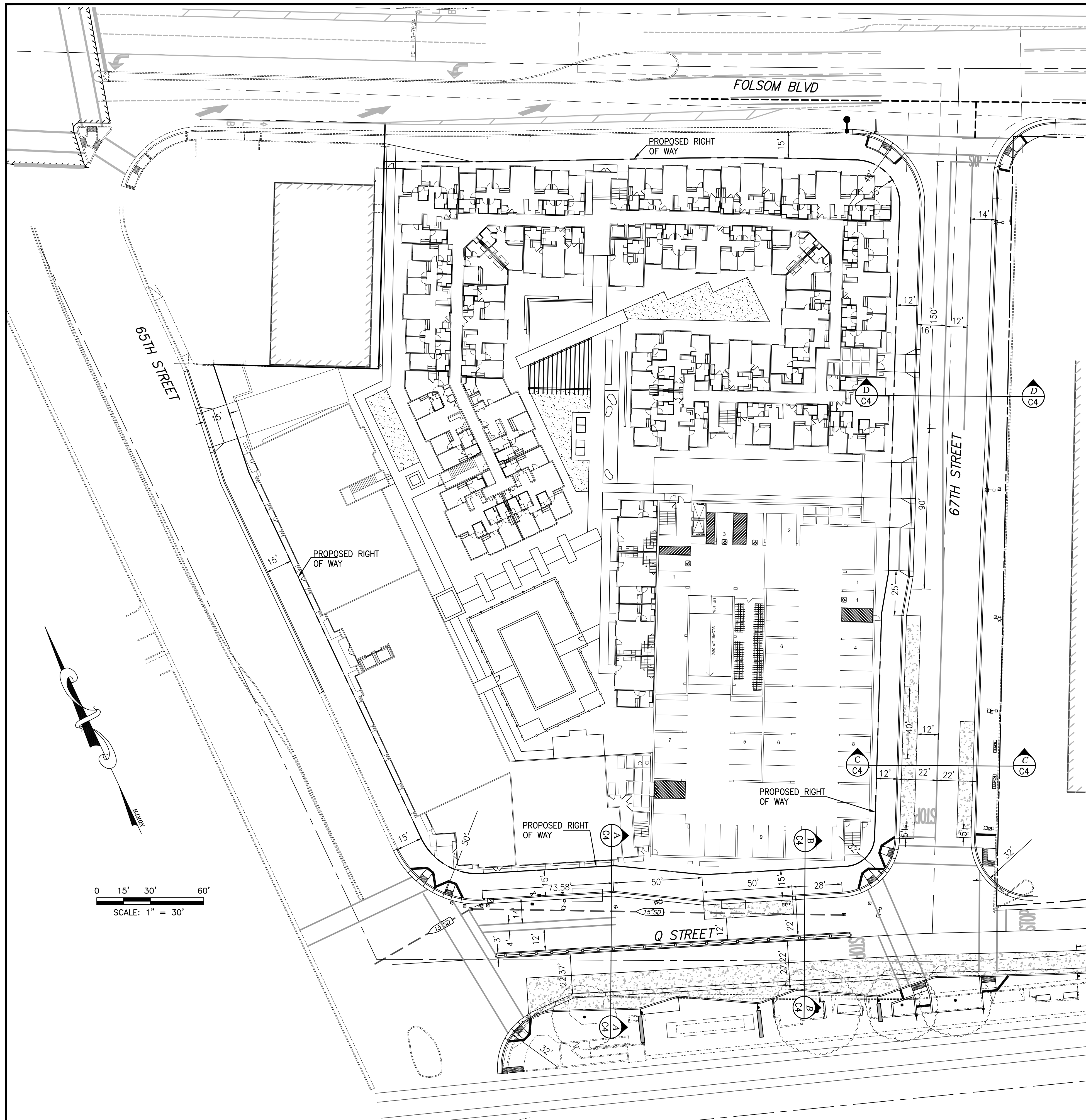
DESIGNED: PHYA
DRAWN: PHYA
CHECKED: FNW
SUBMITTED: JAVED T. SIDDIQUI
SCALE: H:1"=30'
V:
RCE:25924



NO.	DESCRIPTION	ENGR INIT	APPROVAL BY DATE

PRELIMINARY UTILITY PLAN
6620 AND 6800 FOLSOM BLVD
CITY OF SACRAMENTO
APN: 015-001-003 AND 021
CALIFORNIA

DATE: 5-15-18
SHEET
C3
OF 4



BENCHMARK ELEVATION: 35.664'
CITY B.M. 298-B7E
HILTI NAIL IN BASE OF SECOND ST.
LIGHT (HISTORIC TYPE), EAST SIDE
OF 65TH ST., 90' ± NORTH OF
FOLSOM BLVD. D.B DATUM:NGVD29
FIELD BOOK NUMBER: PAGE:

JTS ENGINEERING
CONSULTANTS, INC.
1808 J STREET
SACRAMENTO, CALIFORNIA 95811 (916) 441-6708

DESIGNED: PHYA
DRAWN: PHYA
CHECKED: FNW
SUBMITTED: JAVED T. SIDDIQUI
SCALE: H:1"=30'
V:
RCE:25924



NO.	DESCRIPTION	ENGR INIT	APPROVAL BY	DATE

PRELIMINARY STREET LAYOUT PLAN

6620 AND 6800 FOLSOM BLVD

CITY OF SACRAMENTO

APN: 015-001-003 AND 021

CALIFORNIA

DATE: 5-15-18

SHEET

C4

OF 4